

All Images

Press Release 11-220

U.S. Rivers and Streams Saturated With Carbon

Significant amount of carbon in land is leaking into streams and rivers, then to the atmosphere



A satellite view of the Mississippi River shows a mosaic of riverbank land-use patterns.
Credit: NASA

[Download](#) the high-resolution JPG version of the image. (1.2 MB)



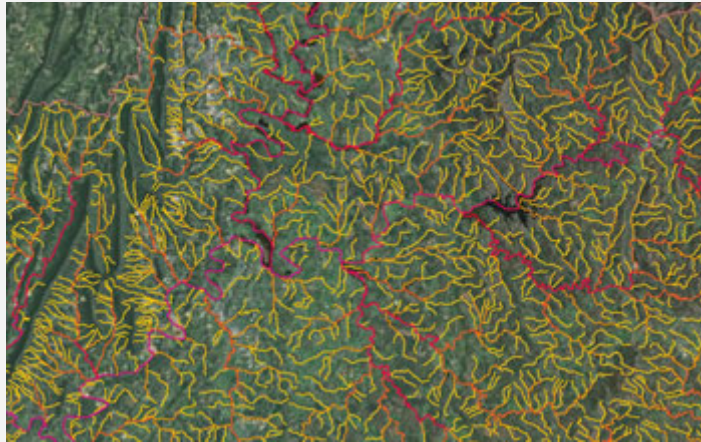
In the study, a weir was placed at NSF's Harvard Forest Long-Term Ecological Research site.
Credit: William Sobzak, College of the Holy Cross

[Download](#) the high-resolution JPG version of the image. (381 KB)



Scientists added a harmless titanium dioxide tracer to streams and rivers to track carbon flow.
Credit: *Diana Karwan, Stroud Water Research Center*

[Download](#) the high-resolution JPG version of the image. (436 KB)



Stream lines form a tangled web in this image derived from a set of data on water flow.
Credit: *David Butman, Yale University*

[Download](#) the high-resolution JPG version of the image. (1.7 MB)



A stream runs through it: one of the NSF Harvard Forest LTER site's many waterways.
Credit: *David Butman, Yale University*

[Download](#) the high-resolution JPG version of the image. (3.6 MB)



Early spring on the Connecticut River: scientists followed the flow of carbon along its reaches.
Credit: *David Butman, Yale University*

[Download](#) the high-resolution JPG version of the image. (461 KB)

Use your mouse to right-click (Mac users may need to Ctrl-click) the link above and choose the option that will save the file or target to your computer.